



DIPLOMAT™ ROUND FRONT COMPLETE TOILET with INSULATED TANK

VITREOUS CHINA

DIPLOMAT™ ROUND FRONT COMPLETE TOILET with INSULATED TANK

□ 091-0161-XX1BW

- Vitreous china
- Low-consumption (6.0 Lpf/1.6 gpf)
- 12" Rough-in (305mm)
- Space saving round front siphon action jetted bowl
- Fully-glazed 2-1/8" trapway with 2" ball pass
- Generous 9" x 8" water surface area
- Oversized 3" flush valve with chemical resistant flapper
- Insulated liner in tank to resist condensation on outside surface
- Color-matched trip lever
- Speed Connect® tank-to-bowl coupling system
- Sanitary dam on bowl with four point tank stabilization
- 2 color-matched bolt caps
- Color matched solid plastic seat and cover
- Wax ring gasket with closet bolts
- 100% factory flush tested
- 5 year total toilet warranty

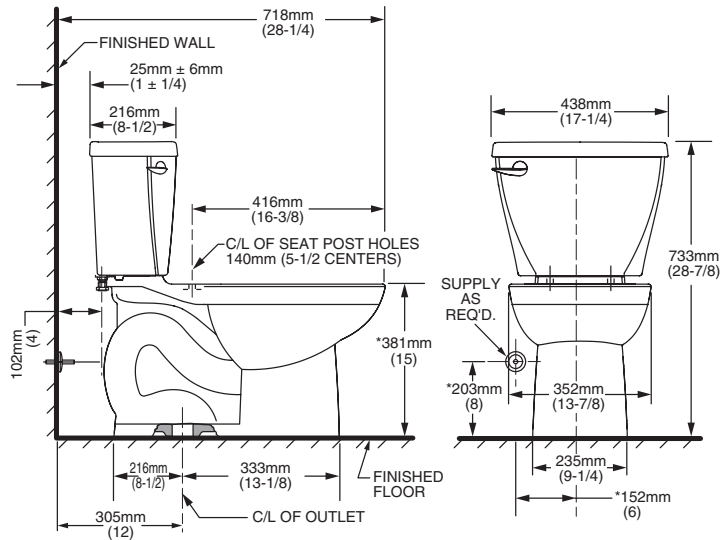
Nominal Dimensions:

718 x 438 x 733mm
(28-1/4" x 17-1/4" x 28-7/8")

Compliance Certifications -

Meets or Exceeds the Following Specifications:

- ASME A112.19.2-200 / CSA B45.1-08
- Los Angeles Department of Water and Power Supplementary Purchase Specification for Non-Adjustability



To Be Specified:

- Color: □ White
- Supply with stop:

NOTES:

THIS TOILET IS DESIGNED TO ROUGH-IN AT A MINIMUM DIMENSION OF 305MM (12") FROM FINISHED WALL TO C/L OF OUTLET. SUPPLY NOT INCLUDED WITH FIXTURE AND MUST BE ORDERED SEPARATELY.

* DIMENSION SHOWN FOR LOCATION OF SUPPLY IS SUGGESTED.

IMPORTANT: Dimensions of fixtures are nominal and may vary within the range of tolerances established by ANSI Standard A112.19.2. These measurements are subject to change or cancellation. No responsibility is assumed for use of superseded or voided pages.