



# STRATUS HET RIGHT HEIGHT™ ELONGATED COMPLETE TOILET VITREOUS CHINA

## STRATUS HET RIGHT HEIGHT™ ELONGATED COMPLETE TOILET

### □ 091-1285-001BW

- Vitreous china
- Includes bowl, tank, toilet seat, wax ring, and floor bolts
- High Efficiency Toilet (4.8 Lpf/1.28 gpf)
- 16-1/2" rim height for accessible application
- Elongated siphon action jetted bowl
- Fully-glazed 2-1/8" trapway with 2" ball pass
- Generous 9" x 8" water surface area
- Close-coupled tank with flat tank cover for superior storage
- Oversized 3" flush valve with chemical resistant flapper
- Chrome trip lever
- Speed Connect™ tank-to-bowl coupling system
- Sanitary dam on bowl with four point tank stabilization
- 2 color-matched bolt caps
- 100% factory flush tested
- Limited Lifetime Warranty



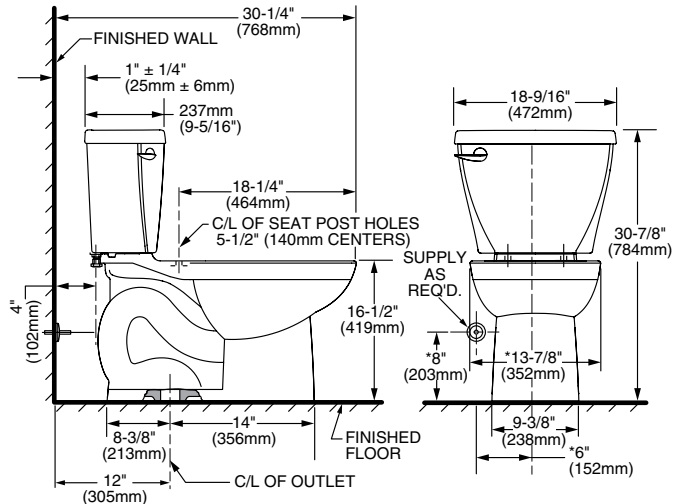
### Nominal Dimensions:

768 x 472 x 784mm (30-1/4" x 18-9/16" x 30-7/8")

### Compliance Certifications -

#### Meets or Exceeds the Following Specifications:

- ASME A112.19.2M for Vitreous China Fixtures - includes Flush Performance, Ball Pass Diameter, Trap Seal Depth and all Dimensions
- Los Angeles Department of Water and Power Supplementary Purchase Specification for Non-Adjustability
- US EPA WaterSense<sup>SM</sup> criteria for HETs



### To Be Specified:

- Color: □ White
- Supply with stop:

### NOTES:

THIS TOILET IS DESIGNED TO ROUGH-IN AT A MINIMUM DIMENSION OF 305MM (12") FROM FINISHED WALL TO C/L OF OUTLET. SUPPLY NOT INCLUDED WITH FIXTURE AND MUST BE ORDERED SEPARATELY.

\* DIMENSION SHOWN FOR LOCATION OF SUPPLY IS SUGGESTED.

**IMPORTANT:** Dimensions of fixtures are nominal and may vary within the range of tolerances established by ANSI Standard A112.19.2. These measurements are subject to change or cancellation. No responsibility is assumed for use of superseded or voided page



MEETS THE AMERICANS WITH DISABILITIES ACT GUIDELINES AND ANSI A117.1 REQUIREMENTS FOR ACCESSIBLE AND USABLE BUILDING FACILITIES-CHECK LOCAL CODES.

