



DIPLOMAT™ TALL HEIGHT COMPACT ELONGATED ONE-PIECE COMPLETE TOILET

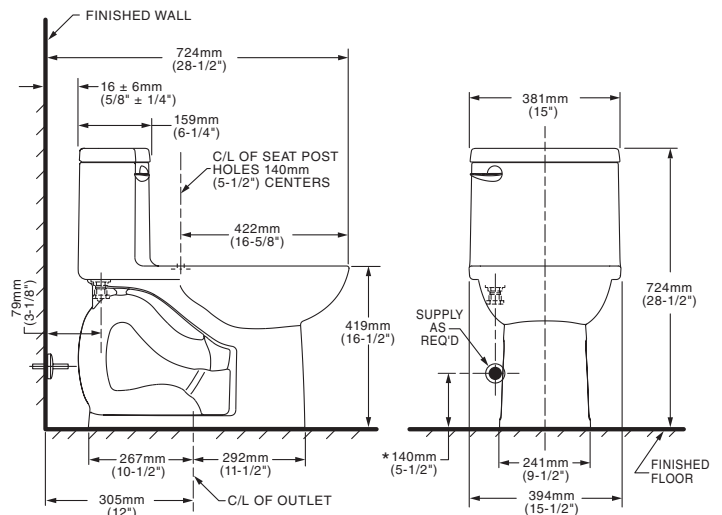
VITREOUS CHINA WITH EVERCLEAN®

BARRIER FREE

DIPLOMAT™ TALL HEIGHT COMPACT ELONGATED ONE-PIECE COMPLETE TOILET WITH EVERCLEAN®

081-4275NT-XXB

- Vitreous china
- Meets definition for HET (High Efficiency Toilet)
- High Efficiency (4.8 Lpf/1.28 gpf)
- Meets EPA WaterSense® criteria
- Space saving compact design - Elongated Tall Height bowl fits in the same space as a round front toilet
- EverClean® surface inhibits the growth of stain- and odor-causing bacteria, mold, and mildew on the surface
- One-piece design
- Elongated siphon action jetted bowl with 2-1/8" trapway
- Internal trapway area fully glazed
- Rim height at 419mm (16-1/2") for accessible application
- Includes color-matched and design-matched solid plastic toilet seat and cover with slow-close hinges and EverClean® surface.
- Includes everything you need, including easy step-by-step manual for simple do-it-yourself installation
- Oversized 3" Flush Valve with Chemical Resistant Flapper
- 10" x 8" water surface area
- 2 bolt caps
- Color-matched Trip Lever
- 100% factory flush tested
- Limited lifetime warranty



Nominal Dimensions:

724 x 394 x 724mm (28-1/2" x 15-1/2" x 28-1/2")

Supply by others

Compliance Certifications -

Meets or Exceeds the Following Specifications:

- ASME A112.19.2-2008/CSA B45.1-08 for Vitreous China Fixtures
- US EPA WaterSense® Specification for HET's

To Be Specified:

- Color:
 - White Bone
- Supply with stop:



MEETS THE AMERICANS WITH DISABILITIES ACT GUIDELINES AND ANSI A117.1 REQUIREMENTS FOR ACCESSIBLE AND USABLE BUILDING FACILITIES-CHECK LOCAL CODES.

NOTES:

THIS COMBINATION IS DESIGNED TO ROUGH-IN AT A MINIMUM DIMENSION OF 305MM (12") FROM FINISHED WALL TO C/L OF OUTLET. * DIMENSION SHOWN FOR LOCATION OF SUPPLY IS SUGGESTED. SUPPLY NOT INCLUDED WITH FIXTURE AND MUST BE ORDERED SEPARATELY.

IMPORTANT: Dimensions of fixtures are nominal and may vary within the range of tolerance established by ANSI Standard A112.19.2. These measurements are subject to change or cancellation. No responsibility is assumed for use of superseded or voided pages.



No Tools Installation



Certified by IAPMO R&T



EVERCLEAN®
Surface